

CERTIFICATE OF LOCATION OF GOVERNMENT CORNER

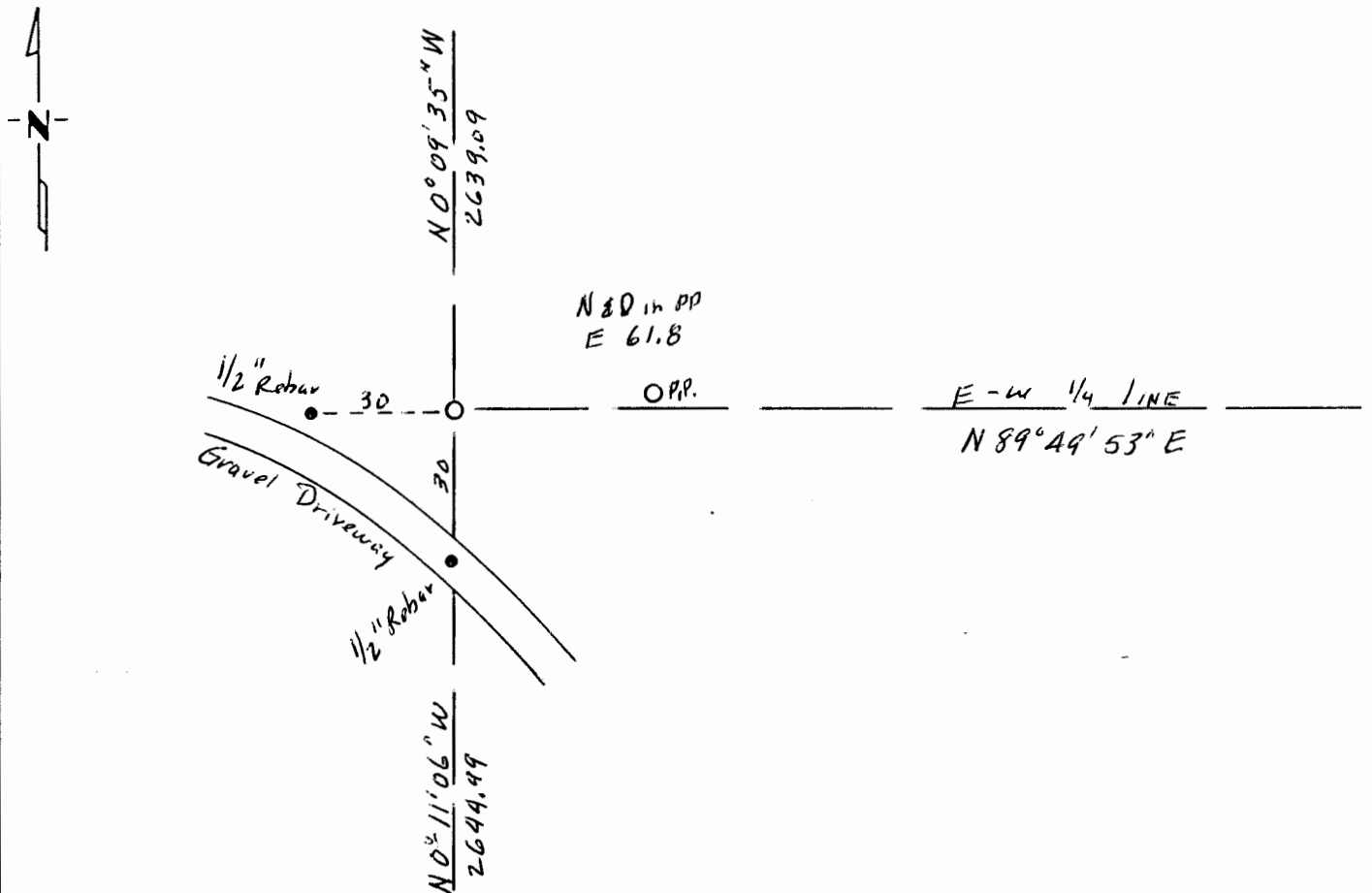
WEST 1/4 Corner of Section 9, Township 100, Range 41, 5 P.M.

STATE OF MINNESOTA, County of MURRAY

At the corner location shown on the sketch:

- On 5-30-2002 found a nothing
DATE
- left monument as found, lowered monument, removed monument (explain)
- On 5-30-2002 placed a T-Bar on E CSAH 30 tangent curve points extended
DATE
west as shown on plans.

SKETCH OF REFERENCE TIES



Statement of evidence relative to this corner location is on back of page.

I hereby certify that this document and the data contained herein was prepared by me or under my direct supervision.

Ernest J. Vickham 7-16-2003
SIGNATURE DATE

Registration No. 12237

- Land Surveyor, Professional Engineer
- County Surveyor, County Engineer

OFFICE OF THE REGISTER OF DEEDS
County of _____

I hereby certify that this document was filed in the Reg. of Deeds office at _____ .M. on the _____ day of MAY 17 2004 A.D., 19 _____

Register of Deeds Jenna V. Johnson
By _____, Deputy

DOCUMENT NO. _____

Statement of Evidence:

Original Corner set by Gov't Survey with pits & marks.

May 1931 FA March reported finding stone and placing 6x8x16 Stone
on top of Found Stone. Stone tied in 1934 & checked in 1936.

Ties are gone

Sept 30, 1974 Stone found and 18" steel Pin placed above. Tie to
PP east 11.83'. No steel pin could be found, but a 1/2" ground
rod was found indicating a pole could have been there.

CSAH No 30 plans show w/4 cor at PI of curve on E of road
to west. Road was obliterated and new access built to south of corner.

On 5-30-2002 I reset the w/4 cor from the E tangents for
CSAH 30 curve points found by iron locator.

Corner appears to be in a small trench dug from a transformer.